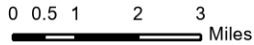


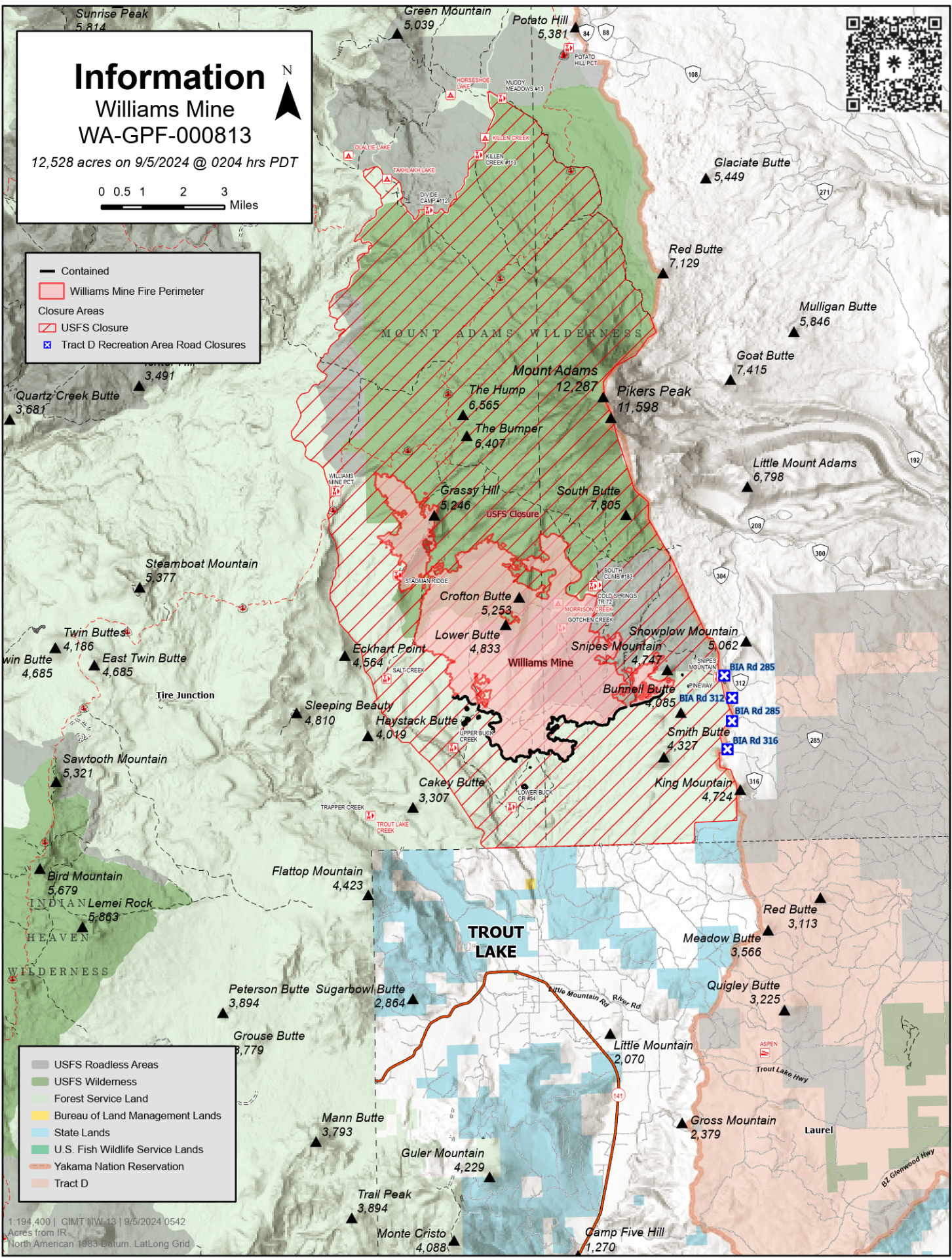
# Information

## Williams Mine WA-GPF-000813

12,528 acres on 9/5/2024 @ 0204 hrs PDT



- Contained
- ▭ Williams Mine Fire Perimeter
- Closure Areas
  - ▭ USFS Closure
  - ▭ Tract D Recreation Area Road Closures



- ▭ USFS Roadless Areas
- ▭ USFS Wilderness
- ▭ Forest Service Land
- ▭ Bureau of Land Management Lands
- ▭ State Lands
- ▭ U.S. Fish Wildlife Service Lands
- ▭ Yakama Nation Reservation
- ▭ Tract D

1:194,400 | CIMT NW 13 | 9/5/2024 0542  
Acres from IR  
North American 1983 Datum, Lat/Long Grid